

Who is Azafady?

Azafady is a UK registered charity and Malagasy NGO working in partnership with disadvantaged communities to improve living standards and quality of life in positive coexistence with the fragile and unique local environment. Founded in 1994, the organisation works in 30 of the most impoverished villages on the globe and in the urban centre of Fort Dauphin, south east Madagascar, home to a population of some 300,000 people. Azafady works with local people to conserve threatened forests situated along 70 km of coastline, home to countless endemic and endangered species.

Azafady's aim is to help the poorest communities in Madagascar to empower themselves and develop in sustainable ways, increasing local access to health care and education. A core priority is to conserve the delicate ecosystems of Madagascar through facilitating viable alternatives to deforestation. Our programs are at the frontline of global conservation and development work, with integrative and innovative projects which emphasise training, capacity building and education geared towards helping local people to help themselves.

Our short-term volunteering programs

Following the success of our longer-term volunteer schemes "Pioneer" and "Lemur Venture", (for which we were named "Best Volunteering Organisation" at the 2007 Responsible Tourism Awards), Azafady's new short-term volunteering programs have been designed to allow those with just a little time to spare the opportunity to assist us with our community development and conservation work in Madagascar.

All our short-term projects have been carefully selected to deliver meaningful results in a short period, so you can be confident that your work is worthwhile and will still fit into a two to three week break. Each program benefits from the support of Azafady's long-term project work in Madagascar, meaning that you can be positive that the benefits of your hard work will continue well after your time in Madagascar ends.

Our short term programs are not-for-profit schemes. There are no shareholders, no fancy salaries, no plush offices, and there's no glossy literature. Funds generated by the programs support Azafady's projects in Madagascar, with some 90% of all donations to Azafady being spent in direct pursuit of our charitable aims.



By joining one of our programs you will be benefiting from Azafady's decade of experience of working in Madagascar and each scheme is led by an award winning team of experienced project leaders. No particular skills are required to volunteer with us and training is given locally. However, if you do have particular skills or experience in areas relevant to your project, this will enhance your contribution.

Our short-term programs are ideal for those who can only spare a couple of weeks off work or who may be new to volunteering and don't wish to commit to a longer scheme. It is also sometimes possible to combine short-term programs or to extend your stay; and get a real flavour of what Madagascar has to offer.

About Madagascar

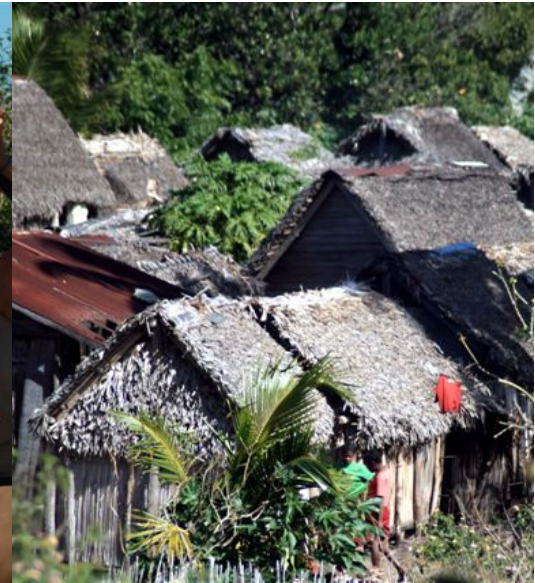
Madagascar is unique and one of the most fascinating yet least-travelled areas of Africa. The sheer diversity of this ancient island is astounding, from the people to the geography, climate, architecture and wildlife. Brimming with endemic fauna and flora, Madagascar's ecological importance is unrivalled anywhere else in the world. Eighty per cent of the island's plant and animal species are found nowhere else on earth and as such Madagascar has been recognised as one of the planet's top conservation priorities.

Whilst biologically rich, Madagascar is one of the economically poorest countries on earth. Over 70 % of the island's population of 18 million people live on less than 1 US dollar a day. Extreme poverty poses an enormous and ongoing threat to the island's staggering biodiversity, not least through deforestation caused by slash-and-burn agriculture. Many unique species have already been lost whilst many others, including some as yet un-described by science, face extinction.



Community Construction

This project supports Azafady's award-winning Pioneer program, building rural schools in isolated and beautiful Malagasy villages. This is the scheme for people looking for a fitness-building outdoors experience that really makes a difference to the lives of those less fortunate. You will join a group of like-minded volunteers, working alongside community members, camping in a stunning rural environment, engaging in hands-on construction of a 6 meter by 12 meter two-room, stone floored, tin roofed, wooden school house, equipped with tables and chairs, blackboard, shelving and water and sanitation infrastructure.



The majority of Madagascar's population live in isolated rural communities, many of whom have little or no access to even basic levels of formal education. One of the challenges of the Malagasy government's Madagascar Action Plan (MAP) is to create a successful primary education system by "increasing school capacities especially in vulnerable zones, through the development of school infrastructures, the training and the recruitment of new teachers." The government aims to construct at least 3,000 classrooms by 2012 to enable children aged 6-14 to be taught for at least a half-day, every day.

In this project, volunteers will help Azafady to address the high demand for schools in the rural commune of Mahatalaky. Mahatalaky consists of 16 fokontanies, or villages, each made up of several outlying hamlets. The commune is vast and communities isolated from each other. Many fokontanies have no formal educational services and children may walk up to 20km per day to attend schools in other communities. It is no surprise that illiteracy in this area is among the highest rates nationally. Yet schools in the area are heavily over capacity such is the desire among children to learn.

Azafady, in collaboration with the education authority CISCO, has set up a schools building program for Mahatalaky. As part of the collaboration CISCO is committed to providing teaching staff. So

far this program has completed 8 community school buildings for 8 villages that previously had no state provided school, benefiting over 2000 children.

Highlights

Because project sites vary, recreational opportunities will be different for each location however you will be immersed in the unique Malagasy culture for the entire visit. The extraordinary environment is always stunning, with exciting flora and fauna never far away and you will visit Nahampona Reserve to see several species of Madagascar's famous lemurs. There will also be optional excursions to nearby attractions and rural markets.

Field Conditions

Volunteers camp for the duration of the scheme in some of the most beautiful campsites in the world. Food is simple, but tasty and nutritionally balanced. Meals mainly consist of rice and beans supplemented with fresh fruit, vegetables, fish and eggs when available. Electricity and western toilets and cold water showers are available when in Fort Dauphin. Whilst working in the remoter villages, toilets are 'long drop' and we collect and treat water from rivers and wells.

Sample Itinerary

Day 1: Arrive in Fort Dauphin. Situated at the beautiful lake-side camp of Lanirano in

Fort Dauphin, you will receive a detailed orientation about Madagascar and local customs. Afternoon tour of Fort Dauphin .

Day 2: A visit to Nahampona Reserve will allow you to get up close to several species of lemur including Verreaux's sifaka, ring tailed lemurs, and brown lemurs. This will be followed by a brief of the project you will be working on for the duration of your time in Madagascar.

Day 3: Travel to bush site. Set up camp.

Day 4-7: Working alongside like-minded volunteers and community members, you will help in all aspects of building a school – engaging in hands on construction of the school house, equipped with tables and chairs, blackboard and shelving, as well as water and sanitation infrastructures

Day 8: Day off to relax and enjoy an excursion to a local market, forest or beach depending on project location

Day 9-12: School building

Day 13: Return to Fort Dauphin

Day 14: A day at leisure to relax and enjoy the beautiful beaches of Fort Dauphin before catching your flight home.

2011 departures: 12th January, 6th April, 6th July, 12th October.

Minimum donation: £595 for 2 weeks, £795 for 3 weeks

English Teaching

This project provides a fantastic opportunity for newly qualified TEFL teachers, or anyone wanting some classroom experience, to work alongside Azafady's established English teaching program in a stunning and beautiful region of south-east Madagascar. Activities and experience gained during this project are varied, giving volunteers the maximum possible benefit from their time in Madagascar.



Madagascar has very high levels of poverty and unemployment. Some 70% of people live below the poverty line, on less than \$1 a day. The country's main resources are its people and its unique flora and fauna. In recent times, eco-tourism has become increasingly important for the country's economic development and as a viable means of advancing the development of sustainable livelihoods among the Malagasy people. As a result, there has been increased support and demand by locals for the teaching of English as a means of capitalising on the opportunities presented by tourism and the increased presence and activity of international NGOs. The President of Madagascar has recently declared that the country should strive towards becoming trilingual, and the spread of the English language has thus been prioritised.

Azafady's English teaching program began in 2003. The program is threefold, involving the teaching of primary school children, unemployed adults and the training of teachers. Volunteers on this project will support Azafady's long term teaching staff in accomplishing the following (1) improving employment prospects of young people and the unemployed through English language teaching (2) assisting in the creation of "sustainable livelihoods" and (3) bringing the standard and availability of English instruction closer to nationally recognised levels.

Highlights

This project presents an ideal opportunity for those looking to develop skills in the area of teaching English as a foreign

language. You may already be TEFL qualified or completely new to teaching and keen to pursue it as a career. Alternatively, this project would suit fully qualified teachers who are looking to make worthwhile use of their skills outside of term time. Whatever your background, you will be involved in all aspects of the teaching program; from lesson planning to delivering 8 full days teaching during the 2 week placement. Immersed in the unique Malagasy culture for the entire project, you will experience the warmth and hospitality of the local people. You will also visit Nahampona Reserve for a chance to see several species of Madagascar's charismatic lemur.

Field Conditions

Living conditions during the project are simple, with basic, secure accommodation in Fort Dauphin. Volunteers can expect electricity, western style toilets and cold water showers. Food is simple, but tasty and nutritionally balanced. Meals mainly consist of rice and beans supplemented with fresh fruit, vegetables, fish and eggs when available.

Sample Itinerary

Day 1: Arrive in Fort Dauphin. Time to settle in to your accommodation before enjoying welcome drinks to allow volunteers and staff to get to know one another.

Day 2: You will receive a detailed orientation about Madagascar, the Anosy region and local customs as well as a brief of the teaching projects you will be working on for the duration of your time in Madagascar. You will also have a chance to

explore the town of Fort Dauphin and its beautiful beaches.

Day 3: A visit to Nahampona Reserve will allow you to get up close to several species of lemur including Verreaux's sifaka, ring tailed lemurs, and brown lemurs.

Day 4-6: Your teaching program begins. Volunteers will initially act as assistants, observing Azafady's established teachers during 2 or 3 classes, each at different levels. You will participate in lesson planning and then begin to lead your own classes under the supervision of teaching staff.

Day 7: Day off to relax and enjoy an excursion to a local market, forest or beach depending on project location.

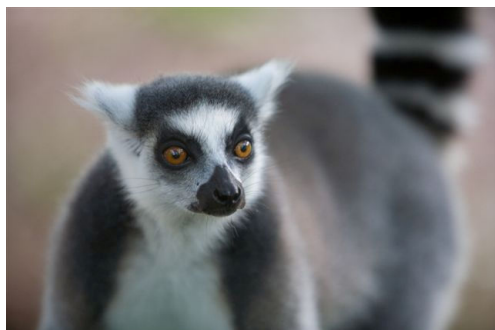
Day 8-9: These days will be spent teaching at Azafady's beautiful lake-side Sustainable Livelihoods Training Centre at Lanirano, in the shadow of the granite-mountains of the Tsitongambarika protected area. Here the feeling is more rural, the site being 3km outside Fort Dauphin.

Day 10-13: After two full days teaching at Lanirano, you will move to the public high school where you will teach youth and young adults of varying ages and with different standards of English literacy.

Day 14: A day at leisure to relax and enjoy the beautiful beaches of Fort Dauphin before catching your flight home.

2011 departures: please contact us for availability

Minimum donation: £595 for 2 weeks



Further information

What's included?

Your minimum donation covers all in-country travel costs (excluding flights), project costs, training, meals and plenty of safe water, use of campsite facilities/basic accommodation, excursions where detailed, and a dedicated team to guide you in Madagascar, plus a full-time London-based staff member to answer all your pre-project questions.

Additional costs that volunteers need to cover are their own pre-departure costs including flights, visa, personal equipment, medical preparations and vaccinations, which are typically in the region of £1,000 - £1,500, and a standard Country Registration fee of £95 paid to Azafady. The Registration fee covers all aspects of police and commune registration costs in Madagascar, as well as compulsory inclusion in Azafady's comprehensive travel insurance policy which Azafady purchases for every volunteer (Details of the policy can be provided on request).

Upgrades and Extensions

Azafady can help to arrange upgrades and extensions to our programs including hotel stays and other tours. There is also an opportunity to extend your stay and join another program at a discount.

Pre-project support

Azafady will provide you with full support prior to your departure to enable you to make the necessary preparations for your time in Madagascar. Whilst volunteers will need to make their own flight arrangements, we will give you contact details for recommended travel agents and flight companies and detail the possible

routes you can consider. We will also offer you advice about medications, inoculations and travel insurance as well as providing you with all the necessary paperwork you need to complete the visa application. Once you have confirmed your place on one of our programs, we will send you a copy of our "Survival Guide" packed full of useful information from previous volunteers. Azafady staff are always on hand to answer any pre-program questions you may have.

Fundraising

Your minimum donation is essentially a donation to support the charitable work of Azafady. Funds generated by the programs support Azafady's projects in Madagascar, with some 90% of all donations to Azafady being spent in direct pursuit of our charitable aims. Whilst we expect many short-term volunteers will pay the cost of the program from their own funds, it is also possible for volunteers to fundraise towards their participation. In fact, we positively encourage you to do this as it not only raises vital funds, but helps to raise public awareness of the threats to the people and environment of Madagascar. We have a wealth of fundraising expertise and resources available to volunteers, including fundraising manuals, raffle tickets, posters and collection boxes.

Volunteering – is it for you?

Our short-term programs are open to volunteers of all nationalities although we do ask that individuals should be able to

speak English. All volunteers must be over 18, but there is no upper age limit. However, you will need to be very fit, healthy and prepared for sometimes hot and humid conditions and demanding physical work. You should be enthusiastic, feel you can make a real contribution to the program, enjoy working outdoors and as part of a team, and be prepared to work long hours.

You will be joining us on the understanding that you are an active part of our mission in Madagascar, which is to alleviate poverty, improve well-being, and preserve the unique and beautiful environments of southeast Madagascar. We are only able to accept people on our programs who are committed to acting in ways appropriate to such aims and who will be able to live and work in the conditions of Madagascar. You will be asked various questions relating to these factors on the program application form.

Contact us

For further information on volunteering and the work of Azafady in general, please visit our website www.madagascar.co.uk Application forms are also downloadable from the website or can be requested by e-mailing info@azafady.org

Azafady,
Studio 7, 1a Beethoven Street,
London
W10 4LG
Tel + 44 (0)20 8960 6629

